

LONGLIFE Series are professional listening devices that are developed for long-term standby usage. They are equipped with HQ microphones and built-in batteries.

There are different variations of the series which is equipped with same module, therefore please have a look at your packaging, in order to see how long will yours last. The starting version is LongLife 10 which lasts for 10 days.

QUICK SET-UP GUIDE:

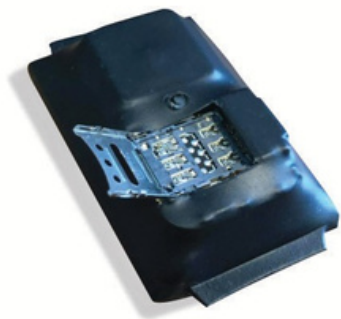
IMPORTANT

■ IT WAS NOT DEVELOPED FOR 220v CONTINUOUS USAGE

DIODE FLASHING SIGNALS:

1. TURN ON THE DEVICE

- Carefully open the SIMCARD slot



- Insert a SIM card with the pin code switched off or a memory card into the device.
- Hold down the power button for 5 seconds (the LEDs will turn on)

2. CALL FUNCTION

- Set the master number of your mobile phone by SMS
- (eg. +000#your phone number#).
- Dial the units number.
- The device answers the call and then it is possible to listen to surroundings.
- To call back, send an SMS 333 to the device number. When the volume exceeds 60dB, the device will call the pre-set master number.



Number settings:

If your initial SMS settings does not work, try the following combinations

000#+420728 7#

000#00420728 7#

000#728 7#

SMS COMMANDS

Setting the master number of the unit		+#phone number# Ex. 000#606053025#
Sound detection	222	When it exceeds 60dB, it records 10 minutes of audio on the memory card
Callback	333	When exceeding 60dB, it calls the set master number
Disable all functions	555	Cancels all set functions
Sms vibration detection	666	It sends an SMS to the master number in case of vibration detection
Call vibration detection	777	Calls the master number if vibration is detected
Sending a location	999	Sends the current location via SMS
Password reset	pwrst	Resets the set password
Factory reset	1122	Resets the device to factory settings
Imei check	Imei#	Displays the device's imei
Restart the device	SYSRST#	Restarts the device
LED on / off	LED#on / LED#off	Turns on the diode Turns off the diode

PACKAGE CONTENT

- The LongLife module
- Battery charger
- Cable
- 3M Sticker for easier placement

USEFUL INFORMATION

If battery is fully discharged, charging will start 3 min after connecting the device into power supply. We recommend to format battery before you start using the device. Charge the device at least 10 hours and then let it discharged. Repeat three times. After device will be fully formatted, charge it for 8 hours, ideally. Please note, quality of mobile signal in the place of installation strongly affects quality of interception When device is not rechargeable, re-insert SIM card or re-charge the device. When call back function doesn't work properly, even if activated, re-insert SIM card

DISCLAIMER

This user manual can be slightly different from specific product. Before start using the device, check your local legal terms. Neither supplier nor distributor don't assume and responsibility for using device in conflict with local law.